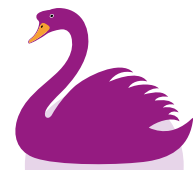


Uniform



POLICY

Swansfield Park
Primary School

All children are required to wear the school uniform and we hope that by wearing the uniform they will take pride in being a member of Swansfield Park Primary School.

At Swansfield Park Primary School we teach and uphold British Values, a core part of the school curriculum. One key aspect of this is the understanding of the importance of law. We have established school rules which help to keep children safe and ensure that the school community is orderly. It is essential that parents support the school in upholding these rules and ensure that children comply with this school uniform policy.

Uniform with the logo can be ordered from the school office or online at www.border-embroideries.co.uk. Other items may be purchased from any school uniform provider.

Our school uniform consists of:

- Purple sweatshirt or cardigan with or without school logo
- Purple or white polo shirt with or without school logo
- Grey trousers, skirt, pinafore or shorts
- Black flat shoes (no trainers, boots or sandals)
- Black or grey socks with trousers
- PE kit with or without school logo
 - purple shorts
 - White T shirt
 - Trainers for outdoor PE
 - Plain black leggings or jogging bottoms for winter outdoor PE

The following items may also be purchased:

- Reversible jacket
- Tartan skirt, kilt & pinafore
- PE hoodie
- Purple gingham summer dress



Wellies and waterproof clothing will be required for outdoor learning during the winter months.

Hair style is a matter that requires good taste and a judgement as to what is in the best interest of the pupil as well as in the interest of the school overall. Allowing a child to adopt the latest fad or trend is not always consistent with both these points. Dramatic hairstyles are therefore not acceptable, such as shaved hair, tracks or lines. Hair should be natural colour and long hair must be tied back at all times. Hair accessories should be small and neat, in school or neutral colours.

In line with recommendations from the Association of Physical Education, earrings and jewellery will not be permitted in school at any time and we will ask for these to be removed.

| This policy has been formally adopted by the governing body. | | |
|--|--------------|---|
| VERSION HISTORY | | |
| VERSION | DATE | DESCRIPTION |
| Initially adopted | July 2014 | Adapted into Swansfield Park First School |
| Review | March 2016 | |
| Review | August 2016 | Adapted into Swansfield Park Primary School |
| Review | October 2017 | De-gendered |
| Review | June 2021 | Updated |
| This Review | October 2022 | Minor updates |



Headteachers:
Mrs J E Smith
 BSc PGCE,
Mrs A-M Grimes
 BA(Hons) PGCE



| APPROVAL AND AUTHORISATION | | | | |
|----------------------------|-------------------------|--------------------|--------------------|--------------------|
| | NAME | JOB TITLE | SIGNATURE | DATE |
| Approved | Jenny Smith | Head Teacher | <i>J E Smith</i> | October 2022 |
| Approved | Angela Jefferies | Chair of Governors | <i>A Jefferies</i> | October 2022 |
| DATE OF NEXT REVIEW | | | | Autumn 2025 |

www.swansfield.northumberland.sch.uk